



Email: admin@ditsogo.group

Workshop: Stand 55, Factory 5, Mogwase Industrial SEZ Park.

We have satellite branches in:
Steelpoort, Mogalakwena, Witbank, Northern Cape.

Locate our office in the following address:
B8 Rasimone, Rasimone Village.
Factory address: Stand 55 Factory 5 Mogwase Industrial SEZ park





ABOUT US.

Ditsogo Engineering and Mining (Pty) Ltd is a 100% black-female owned steel engineering, fabrication and mining support business. We are BBBEE Level 1, Doorstep company with a 135% procurement spend recognition. Established in 2012, we operate in the mining, construction, hospitality and agricultural industry. We offer services which are delivered by highly qualified, motivated skilled team of professionals.

We are located within 30km radius of the biggest platinum producers in South Africa; this places us at an advantage when the potential client assesses the locality of the bidders. As a tier 1 company, we are contributing to our clients Social and Labour Plan score card. Ditsogo as driven by experienced and very female leader, Ms Tebogo Mosito, who was ranked as one of the 100 Global Inspirational Women in Mining 2018 by WIM_UK. We are part of the Anglo Zimele Supplier Development, Impala ESD, supported by SEDA, SEFA and DTIC.

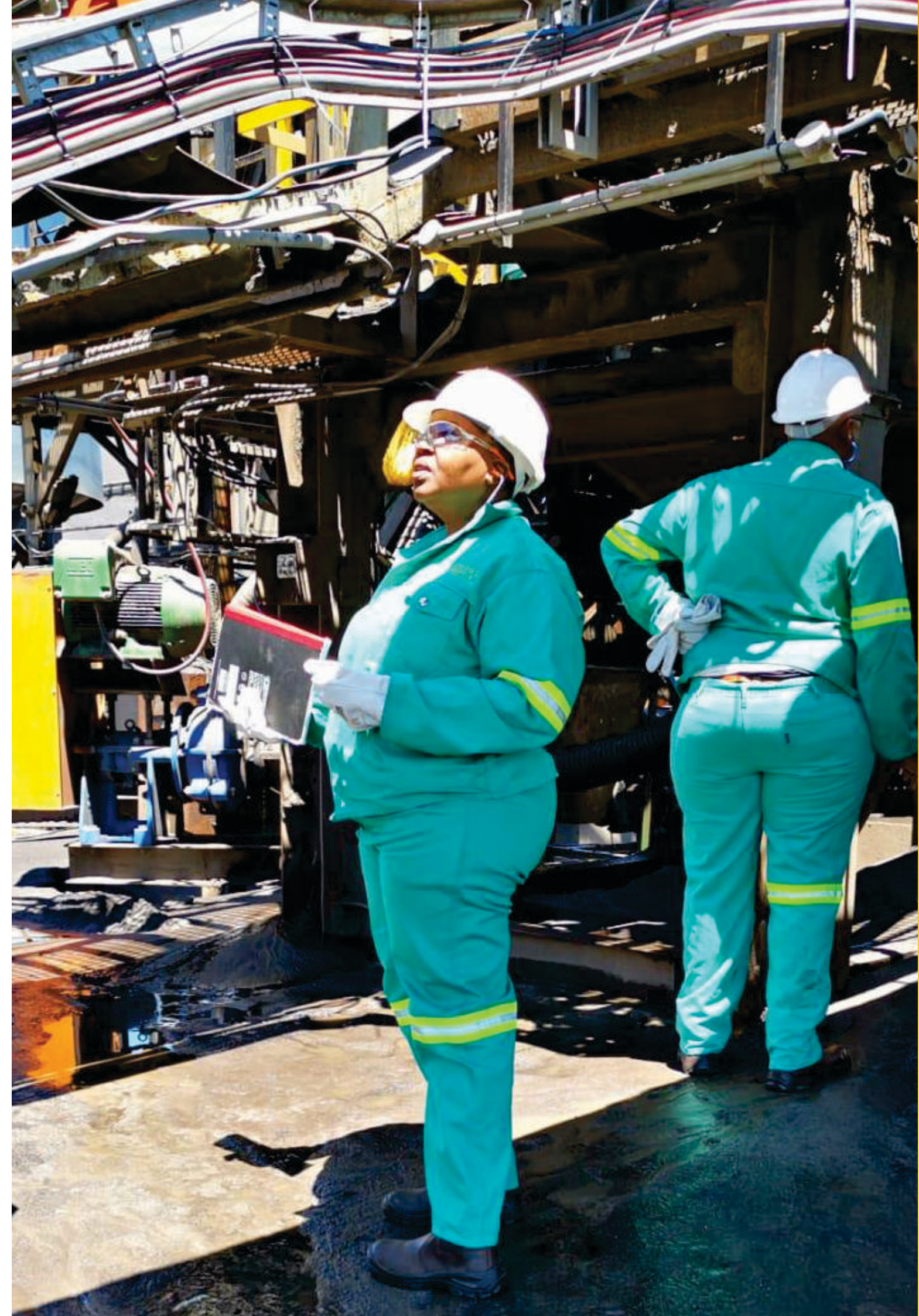
DITSOGO
GROUP

FABRICATION AND MECHANICAL ENGINEERING DIVISION.

- Fabrication, Refurbishment and Engineering services
- Supply and repair submersible pumps, gearboxes, dampers
- Repair and rewind low voltage motors up to 132kw, winch motors and fans
- Supply of mechanical parts and tools, bearings, valves, V-belts, pulleys
- Supply of S355Jr, VRN, Bennox or Stainless Steel material, stringers
- SMPP and corrosion protection
- We also distribute Spectrometer laboratory instruments

SURFACE AND UNDERGROUND MINING SUPPORT DIVISION.

- Installation and repairs of railways and drains
- Contract Mining (shaft sinking, stopping and development)
- Conveyor belt splicing and maintenance
- Installation of secondary support (cable anchors, wire mesh, ventilation seal)
- Reclamation and shotcrete application
- Sweepings and vamping
- Rentals of drill rings earth-moving equipments, repairs of LHD buckets



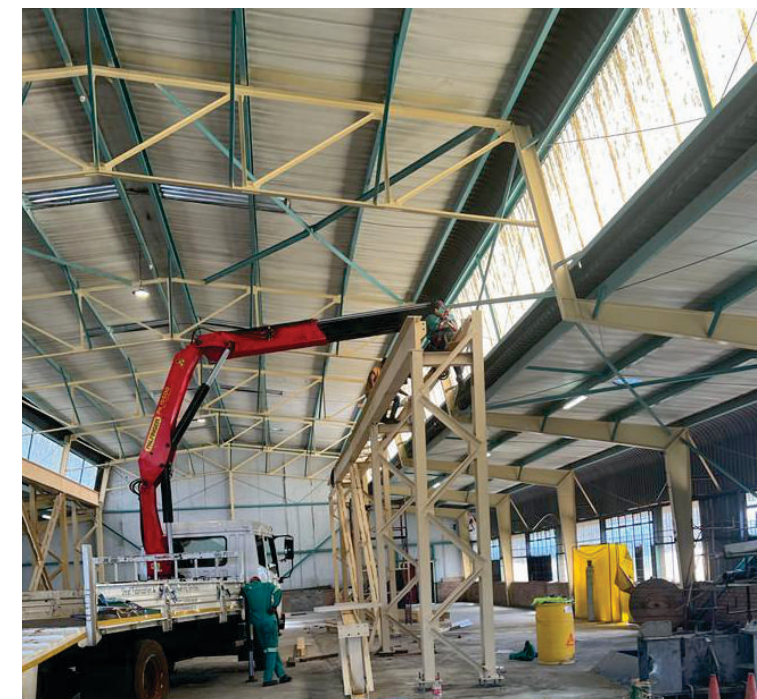
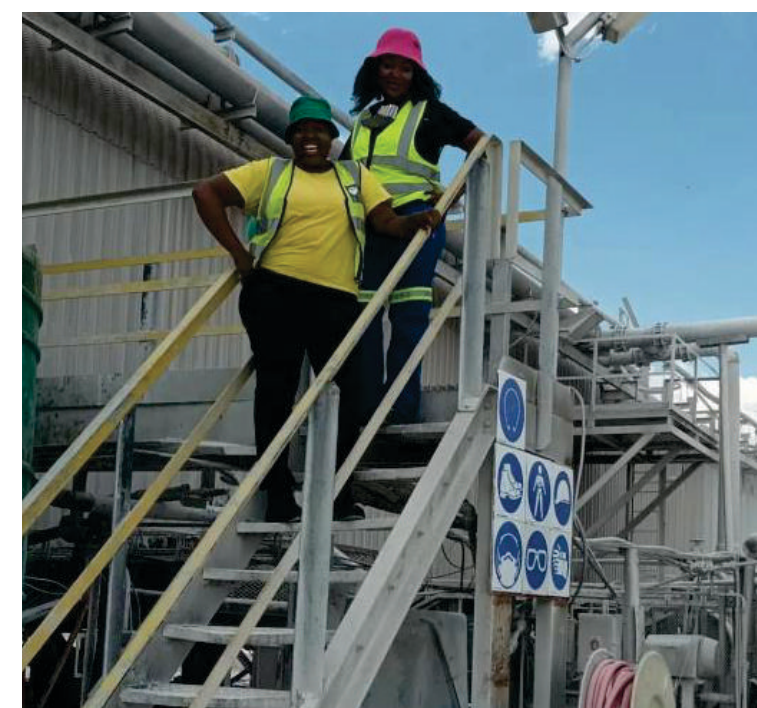
COMPLETED PROJECTS.

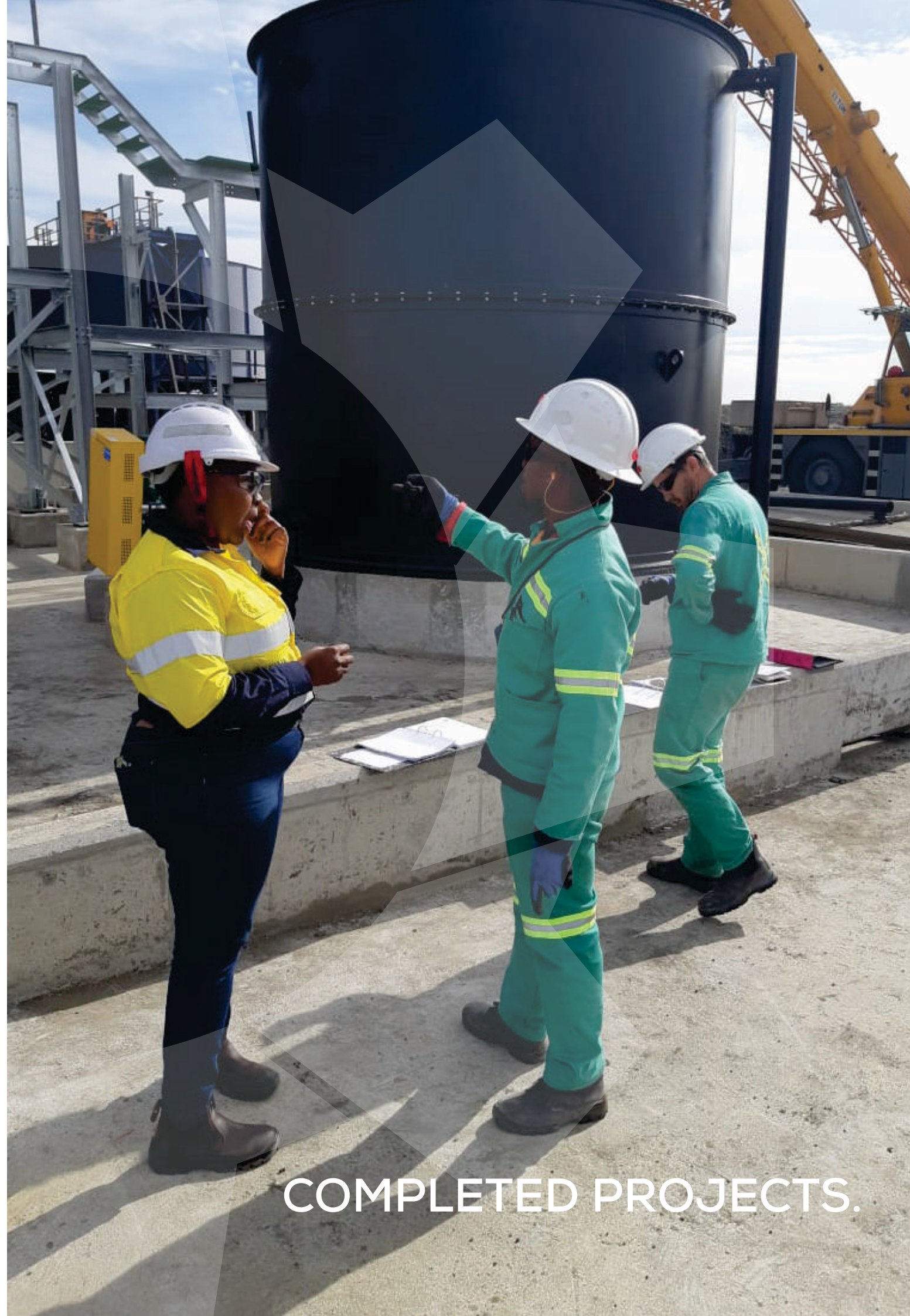
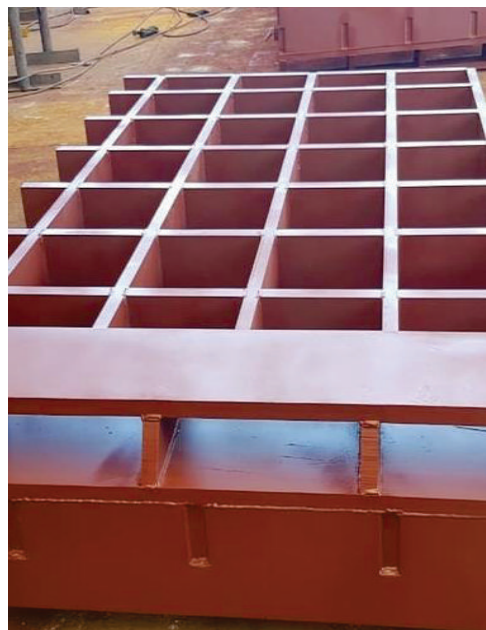
COMPANY	DESCRIPTION	TOTAL VALUE	CONTACT PERSON
<p>Impala Platinum Vendor: 111157</p>	<p>Manufacture rolling stock, explosive cars, chutes, vertical open-sided cars, jumper cars, drying chamber cones, supply of various steel tubing & columns. Installation of carports. Bennox plates, Radial gate shaft & trunion Chairlift traveling way.</p>	R14,450,000.00	<p>Mr. Manie Prinsloo Manie.prinsloo@implats.co.za Tel: 014 569 6671 Cell: 082 806 5610</p>
<p>Bakubung Platinum Mine (Wesizwe) Vendor: 1002636</p>	<p>Manufacture & supply flat material cars, rock breaker support structures.</p>	R1,476,678.00	<p>Ms. Beatrice Ellis Karabo.Mothibi@wesizwe.com Beatrice.Ellis@wesizwe.com Tel: 014 004 1047</p>
<p>Royal Bafokeng PM Vendor: 500635</p>	<p>Manufacture & installation of evaporator cooler platform & catladder, Crawl beam structure, Supply polyurethane liners.</p>	R1,476,678.00	<p>Mr. Angelo De Btyun Angelo.DeBryun@worleyparsons.com Cell: 082 562 3699 Mr Desmond Ramotso Cell: 014 573 1569</p>
<p>Anglo Platinum Vendor: Y81333</p>	<p>Remedial works on conveyor structure, installation of Rs40 mentis grating.</p>	R5,126,500.00	<p>Mr. Lebogang Molefi Tel: 014 598 4704</p>
<p>Mototolo Borwa Shaft Sibanye Platinum Vendor: TRD 709</p>	<p>Manufacture of boom gates, cantilever trusses, scotch cart. steel bases for PMR Supply of underground toilets at Mototolo Borwa Lydenburg</p>		<p>Ms. Lesang Kobe Lesang.kobe@angloplatinum.com Tel: 014 567 9113 Cell: 072 149 6436</p> <p>Ms. Puleng Malema Gloria.malema@angloplatinum.com</p>

CURRENT AND COMPLETED PROJECTS.

COMPANY	DESCRIPTION	TOTAL VALUE	CONTACT PERSON
<p>Sun International (Sun City Resort) Vendor: 136210</p>	<p>Construction of wooden bridge at Bushbungalow, welding of bins at Vacation Club, Steelworks repairs at Valley of Waves, Tiling & epoxy flooring at Cabanas, change house, drain covers at Palace refurbishment of dustbins, Installation of HDPE Pipes and motors supply of various pumps and motor rewinding, compressors, boilermaking services at Cascades Plantrooms, Refurbishment, tiling and painting of SunVillage creche, Installation of pumps at the lower lake.</p>	R2,840,000.00	<p>Mr. Mpho Motswi mpho.motswi@suninternational.com</p> <p>Mr. Thulani Malinga Operations Manager: Maintenance Cell: 082 938 5656 Tel: 014 557 8997 thulani.malinga@suninternational.com</p> <p>Mr. Gumani Madzivhandila Gumani.Madzivhandila@suninternational.com Tel: 014 557 3057</p>
<p>Northam Platinum</p>	<p>Mechanical repairs, pump and electrical motor supplies and supply of steel columns, pipes.</p>	R1,752,000.00	<p>Mr. Sibusiso Nkabinde sibusiso.nkabinde@norplats.co.za</p>
<p>Goss and Balfe</p>	<p>Anglo Platinum Copper Debottlenecking project- local host community subcontractor.</p>	R42,000,000.00	<p>Mr. Lucian Pillay Site Superitendent lucian@gossbalfes.co.za Cell: 078 630 6966</p>
<p>Bushveld Vametco</p>	<p>Manufacture shaft furnace ducting, kiln screws and VRN liners.</p>	R990,970.78	<p>Mr. Jaco Oberholzer Tel: 012 318 3236</p>

OUR FACILITIES.





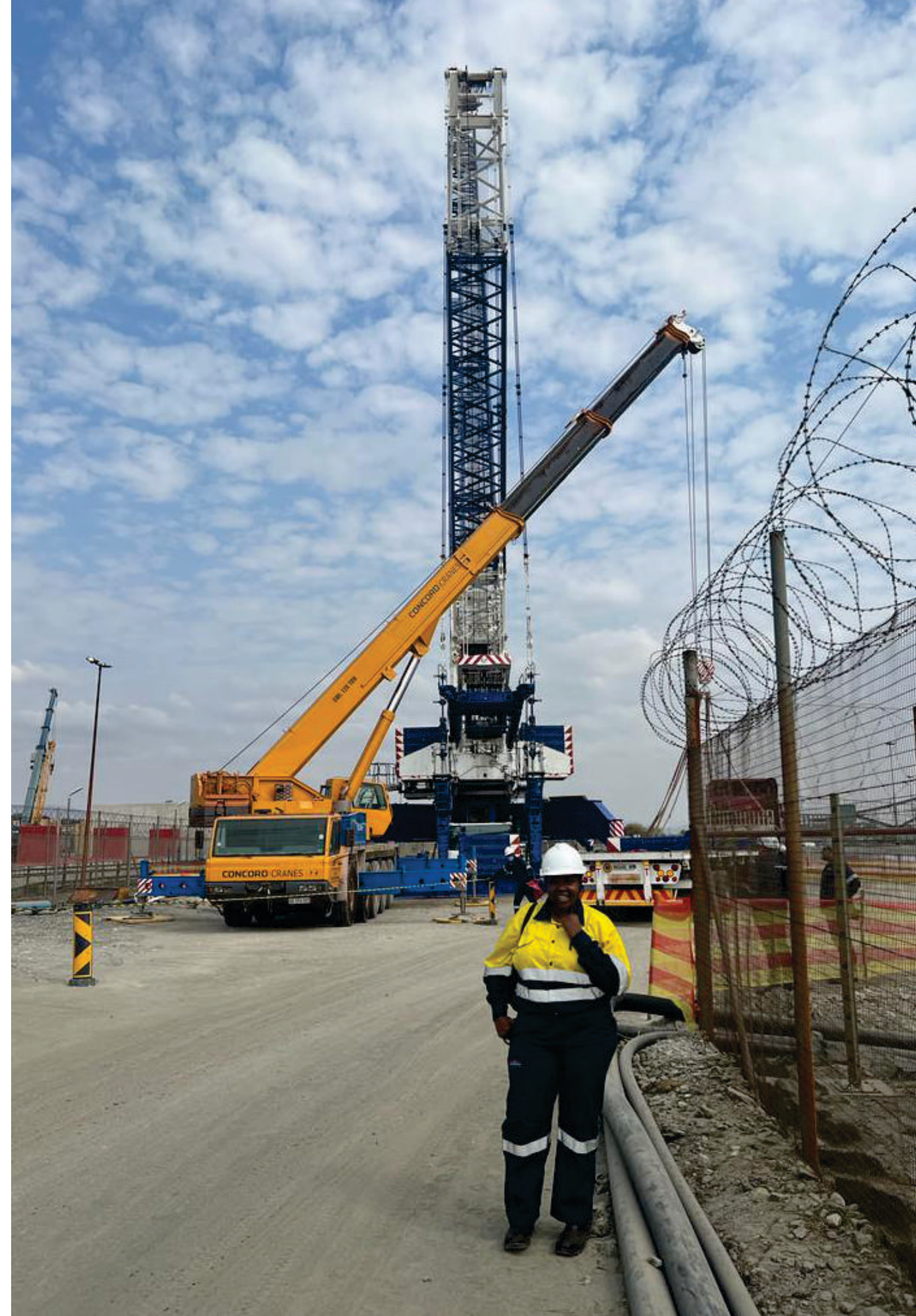
COMPLETED PROJECTS.

LEGAL AND SAFETY COMPLIANCE.

SARS INCOME TAX	9398217175
VAT	4270269121
RMA/ COMPENSATION	Member no. D3001
BBBEE LEVEL	Level 1 (100% BWO)
CK REGISTRATION	2012/023978/07
CIDB GRADING	1 SL PR CRS 10042819 (Upgrade in progress)
PAYE	7920789130
UIF	U920789130
CSD	MAAA0016981
TAX COMPLIANCE PIN	FC22B9423M

TRADE REFERENCES.

- NJR STEEL - 014 596 6193
- STEWARDS & LLOYDS - 011 496 3000
- STALCOR - 011 871 6900
- PARTEK - 027533 4474
- LAUDRIE ENGINEERING - 014 596 7453



OUR CURRENT CLIENTS.

- Impala Platinum
Northam Platinum (Zondereinde & Booyendaal)
- Anglo Platinum (Mototolo, Waterval & RBMR)
- Bakubung Platinum (Wesizwe)
- Bushveld Vametco Minerals
- Samancor TC Smelter
- Sun City Resort-Engineering department
- Omnia OMV Plant
- Royal Bafokeng Platinum

